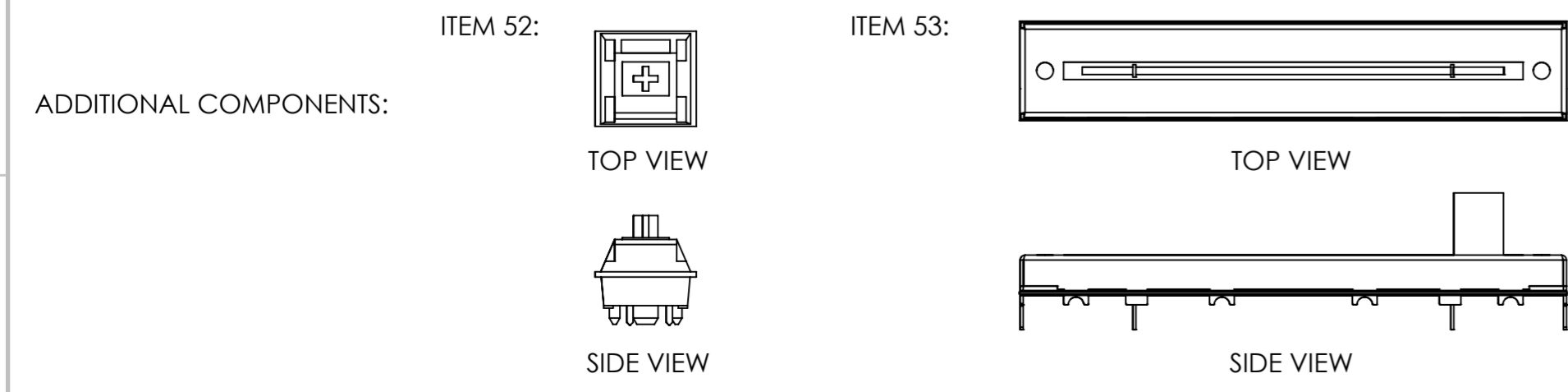
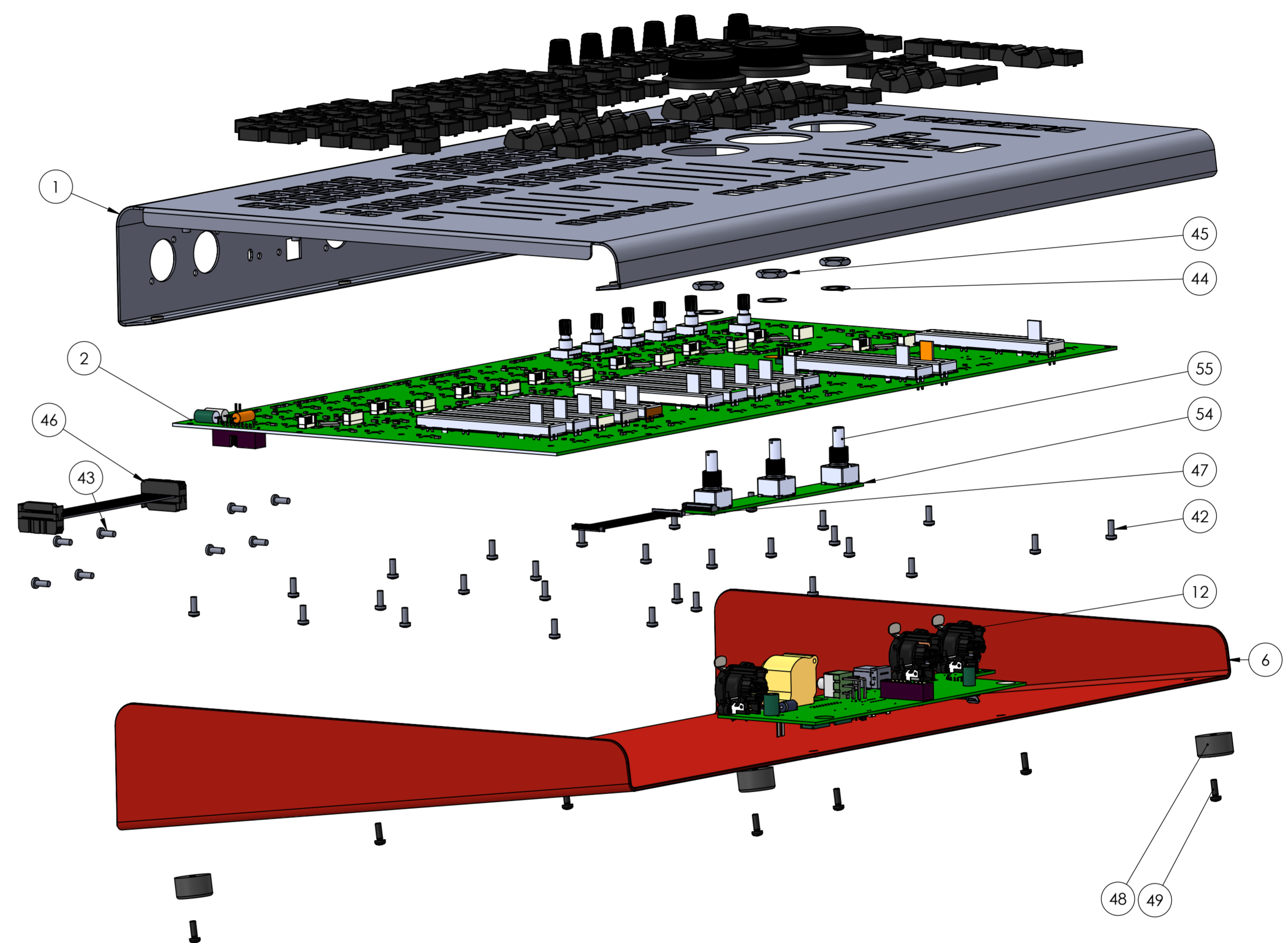



ITEM NO.	PART NUMBER	DESCRIPTION	Revision	QTY.
1	676-0501	SUB-ASSEMBLY CHASSIS COVER & OVERLAY FR VISTA EX	B	1
2	676-0202	COMPLETE, FRONT PANEL, VISTA EX	A	1
3	676-0103	PCB FIL ENCODER BOARD VISTA EX	A	1
4	1922-0010	SW CAP, CHERRY MX CUSTOM, VISTA3 SELECT	A	20
5	1922-0009	SW CAP, CHERRY MX CUSTOM, VISTA3 PLAY	A	20
6	676-0002	CHASSIS BASE, VISTA EX, CONSOLE	F	1
7	1922-0005	SW CAP, CHERRY MX CUSTOM, VISTA3 ASTERISK	A	21
8	1922-0007	SW CAP, CHERRY MX CUSTOM, VISTA3 UP ARROW	A	4
9	1922-0006	SW CAP, CHERRY MX CUSTOM, VISTA3 DOWN ARROW	A	4
10	1922-0037	SW CAP, CHERRY MX CUSTOM, VISTA3 INFO	A	2
11	1922-0034	ENC KNOB VISTA3 SMALL	A	6
12	676-0204	PCB COM CPU BOARD VISTA EX	B	1
13	1922-0008	SW CAP, CHERRY MX CUSTOM, VISTA3SOLID SQUARE	A	12
14	1922-0012	SW CAP, CHERRY MX CUSTOM, VISTA3 EXPAND	A	1
15	1922-0011	SW CAP, CHERRY MX CUSTOM, VISTA3 MENU	A	1
16	1922-0013	SW CAP, CHERRY MX CUSTOM, VISTA3 LEFT ARROW	A	1
17	1922-0014	SW CAP, CHERRY MX CUSTOM, VISTA3 RIGHT ARROW	A	1
18	1922-0035	ENC KNOB VISTA3 LARGE	A	3
19	1922-0001	SW CAP, CHERRY MX CUSTOM, VISTA3 MODIFIER RED	A	1
20	1922-0002	SW CAP, CHERRY MX CUSTOM, VISTA3 MODIFIER YELLOW	A	1
21	1922-0003	SW CAP, CHERRY MX CUSTOM, VISTA3 MODIFIER GREEN	A	1
22	1922-0004	SW CAP, CHERRY MX CUSTOM, VISTA3 MODIFIER BLUE	A	1
23	1922-0021	SW CAP, CHERRY MX CUSTOM, VISTA3 F1	A	1
24	1922-0022	SW CAP, CHERRY MX CUSTOM, VISTA3 F2	A	1
25	1922-0023	SW CAP, CHERRY MX CUSTOM, VISTA3 F3	A	1
26	1922-0024	SW CAP, CHERRY MX CUSTOM, VISTA3 F4	A	1
27	1922-0025	SW CAP, CHERRY MX CUSTOM, VISTA3 F5	A	1
28	1922-0026	SW CAP, CHERRY MX CUSTOM, VISTA3 F6	A	1
29	1922-0027	SW CAP, CHERRY MX CUSTOM, VISTA3 F7	A	1
30	1922-0028	SW CAP, CHERRY MX CUSTOM, VISTA3 F8	A	1
31	1922-0029	SW CAP, CHERRY MX CUSTOM, VISTA3 F9	A	1
32	1922-0030	SW CAP, CHERRY MX CUSTOM, VISTA3 F10	A	1
33	1922-0031	SW CAP, CHERRY MX CUSTOM, VISTA3 F11	A	1
34	1922-0032	SW CAP, CHERRY MX CUSTOM, VISTA3 F12	A	1
35	1922-0016	SW CAP, CHERRY MX CUSTOM, VISTA3 FAST FORWARD	A	1
36	1922-0017	SW CAP, CHERRY MX CUSTOM, VISTA3 FAST REWIND	A	1
37	1922-0020	SW CAP, CHERRY MX CUSTOM, VISTA3 STEALTH	A	1
38	1922-0018	SW CAP, CHERRY MX CUSTOM, VISTA3 STEP FORWARD	A	1
39	1922-0019	SW CAP, CHERRY MX CUSTOM, VISTA3 STEP BACKWARD	A	1
40	1922-0015	SW CAP, CHERRY MX CUSTOM, VISTA3 PAUSE	A	1
41	1922-0033	SW CAP, CHERRY MX CUSTOM, VISTA3 PLAY LARGE	A	1
42	430-1208-0	SCREW M3x8 PH PLPS BLK		28
43	429-6210-0	SCREW SELF TAP PH PLPS BLK ST2.9x9.5 RoHS	N/A	8
44	1929-0001	MISC WASHER LOCK ID10MM OD15MM	N/A	3
45	1929-0002	MISC NUT MOUNTING ID10MM THICK3MM	N/A	3
46	1915-0001	HARN B2B F-F HM1516ATB1 16POS 2ROW 0100 4.52" VISTA3 CX FLATCABLE ZPL6347	A	1
47	1915-0008	HARN B2B F-F 1252-14 14POS 0049 2.7" VISTA EX FRONT-ENCODER BOARD	A	1
48	318-5375-8	FLAT TOP RECESSED BUMPER, RBM-0718-01	A	4
49	430-1210-0	SCREW M3x10 PH PLPS BLK		8
50	1910-0002	POT KNOB FADER, 11mm, BLACK	A	13
51	900-0699	SILICONE RTV 6702, WHITE	N/A	1
52	1922-0036	SW TH CHERRY MX MX1A-G1NB	N/A	111
53	1910-0001	POT TH FADER RS60N1161A06	N/A	13
54	676-0103	PCB FIL ENCODER BOARD VISTA EX	A	1
55	1911-0002	ENC TH 20mm INC 64 QUAD INF VERT	N/A	3

REVISIONS			
REV.	DESCRIPTION	DATE	APPROVED
A	FIRST RELEASE	06/28/2019	ENG

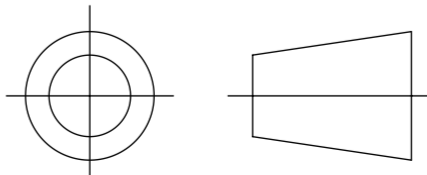




ALL INFORMATION CONTAINED IN THIS DOCUMENT IS PROPERTY OF CHROMA-Q AND MAY NOT BE REPRODUCED IN WHOLE OR PART WITHOUT PERMISSION OF CHROMA-Q

UNLESS OTHERWISE SPECIFIED ALL DIMENSIONS ARE IN MM [INCHES]

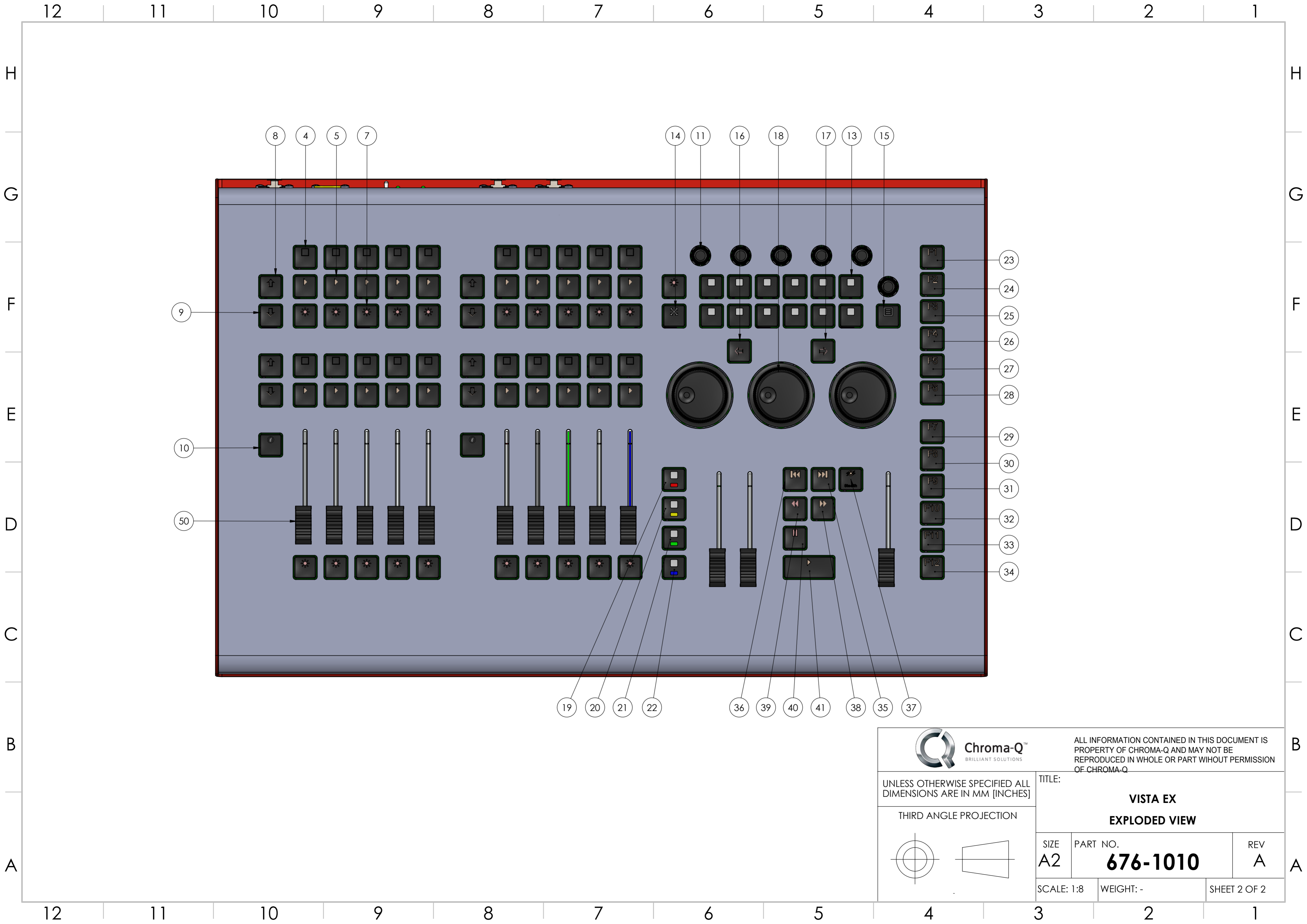
THIRD ANGLE PROJECTION



TITLE:

VISTA EX EXPLODED VIEW

SIZE A2	PART NO. 676-1010	REV A
SCALE: 1:2		WEIGHT: -
		SHEET 1 OF 2



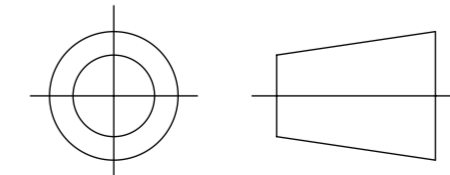
ALL INFORMATION CONTAINED IN THIS DOCUMENT IS PROPERTY OF CHROMA-Q AND MAY NOT BE REPRODUCED IN WHOLE OR PART WITHOUT PERMISSION OF CHROMA-Q

UNLESS OTHERWISE SPECIFIED ALL DIMENSIONS ARE IN MM [INCHES]

TITLE:

**VISTA EX
EXPLODED VIEW**

THIRD ANGLE PROJECTION



SIZE A2	PART NO. 676-1010	REV A
-------------------	-----------------------------	-----------------

SCALE: 1:8	WEIGHT: -	SHEET 2 OF 2
------------	-----------	--------------